



SECURING YOUR CAR



Car theft remains a significant issue in the UK, with criminals finding lots of ways to break into cars, to steal parts or cars. To help protect your vehicle, this guide offers practical steps to try and reduce the risk of theft, vandalism and break-ins.

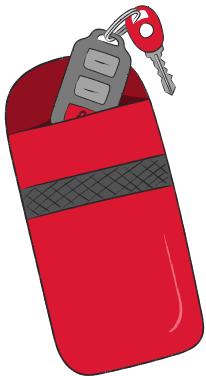
BASIC SECURITY MEASURES

Simple steps to take day to day to help secure your car:

ALWAYS LOCK YOUR CAR

It may seem obvious, but many car thefts occur because car owners forget to lock their vehicle! When leaving your car remember to check the following to ensure it's secure:

- All windows are closed.
- The boot and sunroof are properly shut and secure.
- Double check the doors are locked, especially with keyless entry systems.



KEYLESS CAR ENTRY PROTECTION

Keyless cars are becoming more popular as a high-tech way of unlocking and driving your car. However, devices can be used to intercept the signal from your key fob, without having possession of it. To help protect your car with keyless entry:

- Keep your key fob in a Faraday pouch, which blocks the signals
- Store the key far away from doors and windows when at home to help reduce the risk of signal interception.

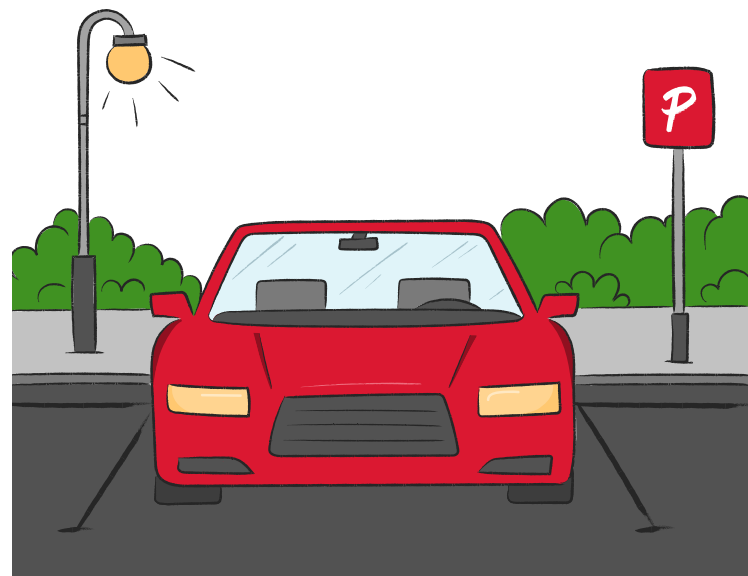
REMOVE VALUABLES

It's important to avoid leaving valuables such as phones, wallets, or bags visible in your car. Leaving items on display can increase the chance of break-in. If you have to leave something in your car, lock it in the glove box or boot. Make sure to have a parcel shelf in your boot to cover items from view through the back window.

PARK IN SAFE, WELL-LIT AREAS

Consider the following things can help protect your vehicle whilst leaving it unattended:

- Where possible, use secure car parks to deter vehicle crime.
- Park in well-lit areas, under street lights & on view of CCTV if possible.
- When parking at night-time, try to leave your car in high foot traffic places. Parking your car in quiet, secluded areas can increase the chance of someone tampering with it.



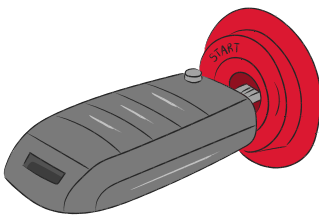
ADDITIONAL SECURITY MEASURES

In addition to the basic security measures above, you can add some of the following additional protection to help give you peace of mind:



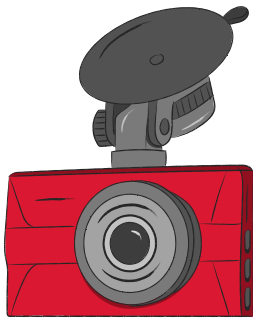
USE A STEERING WHEEL LOCK

This is a highly visible deterrent that can be a way to discourage thieves. There are basic models available, which are still useful, but it's recommended to invest in a high quality, approved lock to offer higher protection.



USE AN IMMOBILISER

Another common thing that's already fitted to modern cars. If you have an older car, it's worth considering getting an immobiliser fitted. This helps to prevent your car from being started without the correct key or code.



DASHCAMS

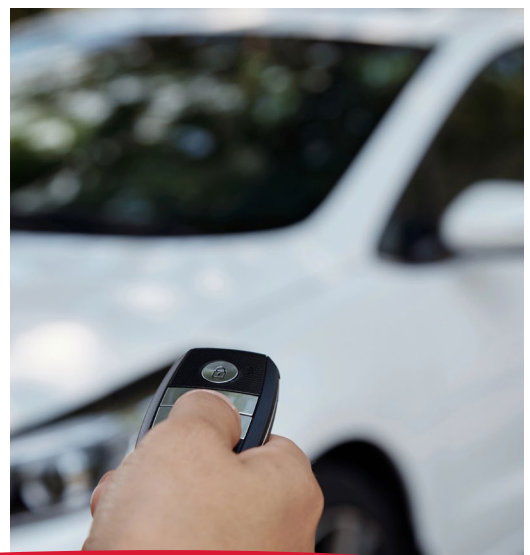
Whilst these are primarily used to record incidents whilst driving, some dashcams have parking modes which can act as a deterrent. The dashcam will begin recording if they detect motion closely around your car when it's parked and been left unattended.

INSTALL A TRACKING DEVICE

A tracking device is useful to provide real-time GPS tracking and has the ability to send alerts if your car has moved without you in it. This can be a useful device on your car, to help recover your vehicle in the event of theft.

FIT A CAR ALARM

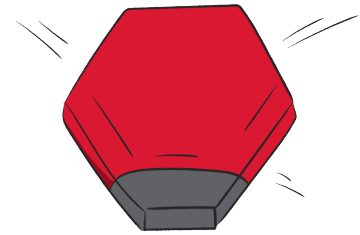
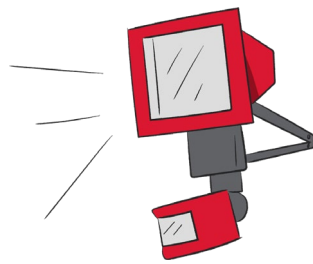
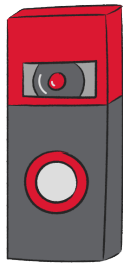
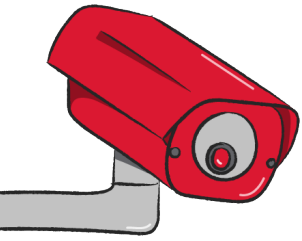
Having an upgraded alarm system fitted to your car can be more robust. Some systems feature motion detectors and alerts available to your phone in case of an attempted break-in.



Taking steps to secure your car gives you peace of mind and can help to reduce your insurance premium. Remember to let your insurer know if you've installed aftermarket alarms, immobilisers, or trackers.

SECURING YOUR CAR AT HOME

It's very common for car thefts to happen when you're at home, without you even knowing! Enhancing your home security can help protect your home, and can also provide additional protection to your vehicle.



INSTALL CCTV OR VIDEO DOORBELLS

Having cameras around your property, that cover your driveway or parking space can be a deterrent. Video doorbells are also good for alerting you to motion.

USE MOTION SENSOR LIGHTS

In unlit areas, it's easier to go unnoticed. Installing motion-sensor lights that come on when someone approaches your driveway or garage is a good security measure to take.

SECURE YOUR GARAGE

If you park your car in a garage, ensuring it's equipped with locks, alarm systems and secure doors can be an additional security measure to protecting your car from being vandalised or stolen.

OTHER TIPS TO KEEP YOU & YOUR CAR SECURE

KEEP CAR DOCUMENTS AT HOME - Although it may seem a sensible, convenient place to keep them, don't leave your logbook or service records in your car. If you're a victim of car theft, the documents will make it easier for the car to be sold. Additionally, having your paperwork fall into the wrong hands could put you at risk of identity theft.

BE AWARE OF CARJACKERS - While being inside your car may feel like a strong deterrent to someone trying to steal it, this isn't always the case. Some cars automatically lock the doors when you start driving, but a sensible habit to get into is locking your car doors as soon as you get into your car. This can provide extra security for you and your passengers whether you're driving, stopped at traffic lights, or queuing in traffic. If you're involved in a car accident, remember to be vigilant. It's sometimes best to wait to pull over somewhere safe and preferably where other people are, to ensure the collision wasn't hijackers. If you're at all suspicious, call the police immediately.

DON'T LEAVE YOUR CAR RUNNING - It can sometimes be tempting to leave your car running, especially in the winter if you're warming up your car, or using it to help de-ice your car. Or if you're just nipping into a shop, dropping children at the school gate or picking someone up. For an opportunistic thief, a car left running can mean they could steal your vehicle in a matter of seconds! Always turn your car engine off and leave doors locked.

Following basic precautions and considering additional security measures can help to reduce the risk of theft or damage to your vehicle. It's important to ensure your car insurance is correct to protect you if anything was to happen. For tips to ensuring you've got the right cover in place, check out our 'Insuring you car' guide here.



CO
vea Insurance