

FLOWERS THAT ARE **POISONOUS** TO YOUR PETS



There are quite a few flowers that are toxic to pets. If they come into contact with pollen, eat them or drink the water from the vase it can be harmful to them. Read this guide on some of the flowers you should keep your furry friends away from.

SOME OF THE MOST COMMON FLOWERS TO BE MINDFUL OF ARE:



LILIES



HYACINTHS



TULIPS



CHRYSANTHEMUMS



DAFFODILS

There are many other flowers and plants that can also be poisonous to your pets, so it's crucial to check any that are in your home, if you are unsure, to keep your pet safe!

Different flowers and plants can affect your furry friends in various ways. For instance, the pollen from certain flowers can cause allergic reactions or respiratory issues. Ingesting parts of the plant, such as leaves, stems, or petals, can lead to symptoms ranging from mild stomach upset to severe poisoning. Additionally, the water the flowers sit in can become toxic, if it absorbs harmful substances from the plants.

To protect your pets, always research any new plants or flowers before bringing them into your home, and consult with your veterinarian for guidance on which plants to avoid.

HOW TO HELP **PREVENT** YOUR PETS FROM BEING HARMED BY FLOWERS & PLANTS

Sometimes it can be difficult to prevent these things from happening, but following the below steps may help to avoid the worst outcome:



Familiarise yourself with what is poisonous to your pets and try to buy pet safe plants & flowers for your home.



Keep any flowers or houseplants that are not safe completely out of reach from your pets.



Repellent sprays on your plants and flowers can help to keep your pets away.



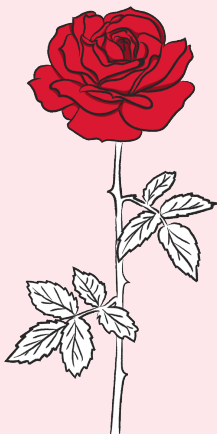
Collect any dropped leaves/petals.



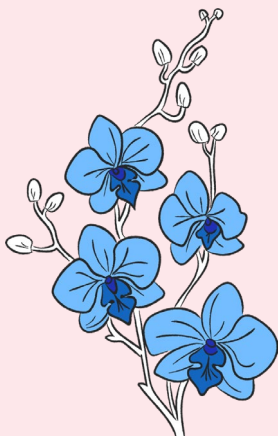
Having plenty of interactive toys around for your pets helps to keep them occupied and away from your flowers!



FLOWERS & PLANTS THAT ARE SAFE TO HAVE AROUND YOUR HOME WITH PETS:



ROSES



ORCHIDS



SUNFLOWERS



GERBERA DAISIES



SPIDER PLANT